

ENGINEERING MEMORANDUM

TITLE		E.R. NO.		FILE CODE	
REPAIR SCHEME REPLACING EXISTING SCREW AND WASHER ON RACK ASSEMBLY FOR RECLINING CHAIR.		12318		111 -84	
PART NO.	PART NAME	CHGR. NO.	COPIES TO	NO.	
USE OF E.R.	DISPOSITION OF STOCK	JOB NO.		ENGR.	3
SALVAGE	AS NOTED	CUSTOMER'S ORDER NO.		INSTR.	6
CONCESSION	REWORK	CUSTOMER		PLANNING	9
STOP ORDER/RELEASE	USE TO DEFLECTION	R C A F		EST. COST.	2
NEW DRAWING	NOT APPROVED	TYPE AIRCRAFT		EST. ADJ.	2
REVISED DRAWING	CHECK BLANKS APPROVED	EXPEDITION 37M		R.A.M.F.	1
VARIATION	PARTS COMPLETED	AIRCRAFT REGISTRATION NO.		ESTIMATING	1
OBSELETE NOTICE	PARTS IN PROGRESS	DATE		DIV. COST.	4
USE AS NOTED	TOOLING	4-JUNE/57			
	RAW MAT'L	YES <input type="checkbox"/>	DIV. CHANGE		
	INTERCHANGEABILITY APPLIED	NO <input checked="" type="checkbox"/>			
	STRENGTH APPROVED				
	YES <input type="checkbox"/>				
	NO <input checked="" type="checkbox"/>				
APPROVALS	<i>A. Harms</i>	CUSTOMER'S ADMIN.		<i>J. McKeown</i>	
	<i>R. Stock</i>				
	<i>R. Macdonald</i>				
	<i>D. J. ...</i>				
	<i>D. A. ...</i>				
	<i>D. ...</i>				

GIVE FULL PARTICULARS AND DESIGN WHERE POSSIBLE

TO PROVIDE FOR SMOOTHER SLIDING ACTION ON RECLINING SEATS, THE FOLLOWING REPLACEMENTS SHALL BE MADE AND PROCEDURE CARRIED OUT.

1. REMOVE EXISTING SCREWS (P/N AN520-10-12) AND WASHER (P/N 100951-DD-187-006)
2. ENLARGE EXISTING HOLES ON BRACKET P/N 404-183302-195 BY DRILLING TO 5/16"
3. 100° COUNTERSINK ON RACK P/N 183349
4. REASSEMBLE RACK USING:

WASHER - TINNERMAN P/N A3235-020
SCREW - P/N AN509-10R13

WASHER IS PLACED DIRECTLY UNDER HEAD OF SCREW.

R001-JUNE-12-1957

NOTE: WHEN USEFULITY IS Doubted, HEAD IS.M. CHANGES ARE TO BE EFFECTIVE UPON PLANNING DEPARTMENT AUTHORIZATION.

TITLE REPAIR SCHEME - REPLACING EXISTING
SCREW AND WASHER ON RACK ASSEMBLY
FOR RECLINING CHAIR

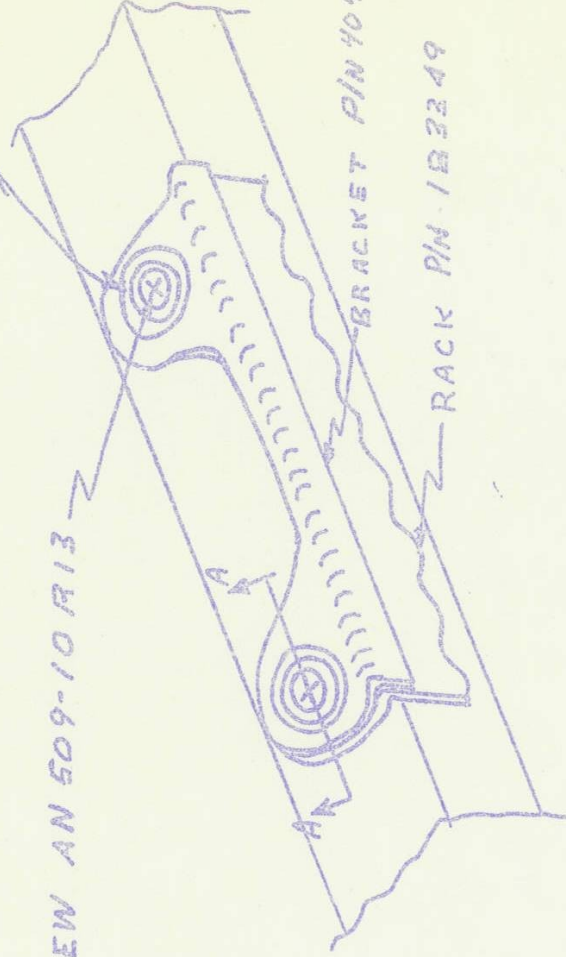
E.M. No.

12318

111
-84

WASHER PIN A3235-020 (TINNER MAN)

SCREW AN 509-10 R13



SECTION A-A